



# **PREMIER MOTOR CORPORATION**

P.O. BOX 15, LEONIA, N.J. 07605  CABLE ADDRESS PREMOTOR  TELEPHONE 288-9685

September 2, 1966

Dear Moto Guzzi Dealer:

We are attaching herewith additional pages for our parts catalogue. This set pertains to the Scrambler model.

The first four pages replace "General Characteristics" and the Numerical Index. Plate 16, 17, and 18 is supposed to go into the rear of the parts book. Please insert these pages into your parts book so that you may keep it up to date.

We are also preparing a new parts price list for our three 125cc models, the Sport, Scrambler and ISD Trial. This price list will follow soon.

Very truly yours,

PREMIER MOTOR CORP.

  
PETER RUECKER

mm  
enc.

## GENERAL CHARACTERISTICS « SPORT » MODEL

### ENGINE

Single cylinder, four stroke, bore 52 mm. (2.043"), stroke 58 mm. (2.283"), swept volume 123.175 cc. (7.515 cu. in.), compression ratio 9.8 : 1, output 12 HP.

#### Cylinder barrel

Of light alloy with special cast iron inserted liner.

#### Cylinder head

Of light alloy with valve gearing in oil bath.

#### Crankcase

Bottom part heavily finned for better oil cooling.

#### Valve operation

Overhead valves, push rods and rocker operated.  
Push rods timed by camshaft and flat bottom tappet. Normal rocker-valve clearance (cold engine)  
— inlet 0.10 mm. (.0039")  
— exhaust 0.15 mm. (.0059").

#### Fuel feed

By gravity from the tank.

#### Ignition

By flywheel alternator (6 V - 28 W) with external H.T. coil.  
Spark plug:  
— for normal cruising: Marelli No. 225 (Bosch thermic scale);  
— for long distance cruising: Marelli No. 260 (Bosch thermic scale).

#### Lubrication

Forced, by gear pump and detachable filter.

#### Cooling

By air, cylinder and cylinder head deeply finned.

#### Clutch

Multiplate discs in oil bath (5 discs).

#### Transmission

Primary drive by helical gears (engine-gearbox) secondary drive by roller chain.

Engine-gearbox ratio . . . . .	2.8 to 1 (25-70)
Gearbox-sprocket ratio . . . . .	2.94 to 1 (16-47)

Overall gear ratios:

Bottom gear . . . . .	25 to 1
Second gear . . . . .	14.9 to 1
Third gear . . . . .	10.6 to 1
Top gear . . . . .	8.2 to 1

### Gear box

Constant mesh gears, 4 speeds foot operated.

Ratios:

Bottom gear . . . . .	1 to 3.04
Second gear . . . . .	1 to 1.81
Third gear . . . . .	1 to 1.29
Top gear . . . . .	1 to 1

### FRAME

Welded tubular structure.

**Front suspension:** telescopic fork with hydraulic dampers.

**Rear suspension:** swinging arm and coil spring on the dampers.

**Handlebar:** raised type, adjustable.

**Seat:** dual seat.

**Brakes:** expanding on both wheels. Front, hand operated - rear, foot operated.

**Wheels:** spoked steel rims 17 x 2 1/4.

**Tires:** front 2 1/2 x 17 ribbed, rear 2.75 x 17 R block tread.

Tire pressure:

front tire abt. 1.7 kgs/mm <sup>2</sup> (abt. 24 lbs/sq. in.) solo
front tire abt. 1.85 kgs/mm <sup>2</sup> (abt. 26 lbs/sq. in.) with pillion
rear tire abt. 1.85 kgs/mm <sup>2</sup> (abt. 26 lbs/sq. in.) solo
rear tire abt. 2.8 kgs/mm <sup>2</sup> (abt. 35 lbs/sq. in.) with pillion

#### Overall dimension and weight:

wheelbase . . . . .	1.250 mts. (abt. 49.23")
length . . . . .	1.900 mts. (abt. 74.80")
width . . . . .	0.720 mts. (abt. 28.34")
height (dry) . . . . .	1.030 mts. (abt. 40.56")
minimum ground clearance . . . . .	0.160 mts. (6.30")
dry weight . . . . .	abt. 93 kgs. (205 lbs)

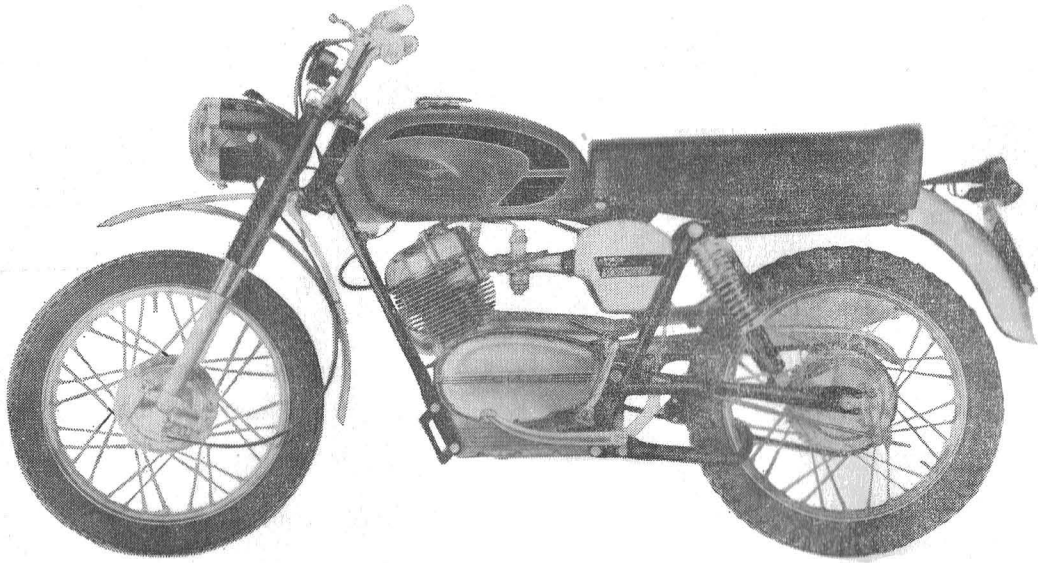
**Performances:** the maximum permissible speeds in each gear are marked off on the speedometer:

bottom gear . . . . .	kms. 33 (20.5 m.p.h.)
second gear . . . . .	kms. 55 (34.1 m.p.h.)
third gear . . . . .	kms. 77 (47.8 m.p.h.)
top gear . . . . .	kms. 112 (70 m.p.h.)

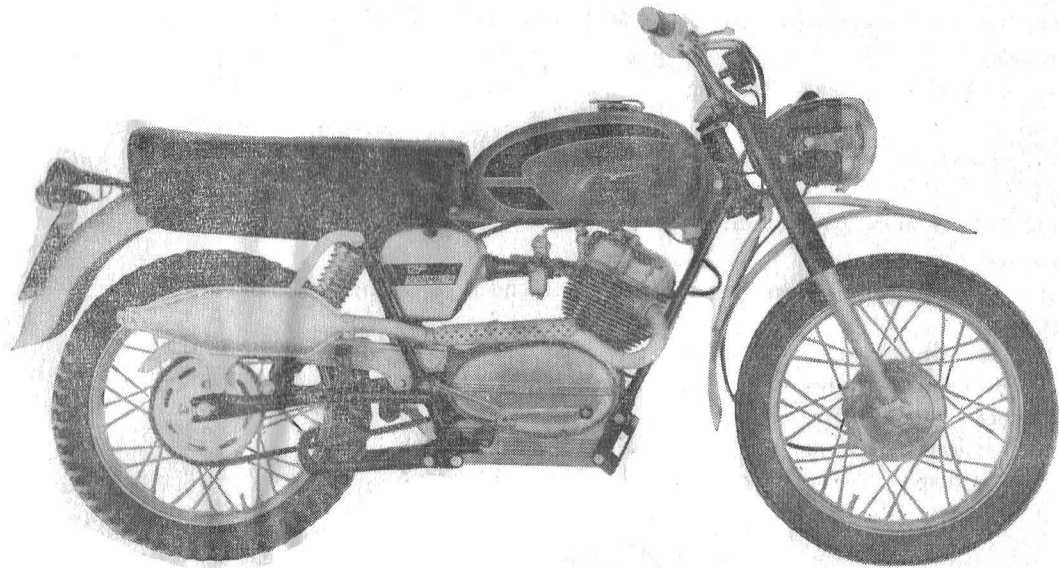
Maximum gradient climbable: 31%.

**Fuel consumption:** 2.7 lts. for 100 kms. (about 104 m.p.g. imp. 87 m.p.g. USA, measured according to CUNA standards).

**Fuel replenishments:** petrol tank capacity 12.5 litres (Imp. gall. 2,749, US gall. 3,302 including a reserve of about 2 litres (Imp. gall. 0.439, US gal. 0.528). Use only high grade petrol. Oil sump in crankcase. Quantity required: abt. 1.9 (0.439 Imp. gall., 0.501 US gall.).



**Fig. 1 - Left hand view**



**Fig. 2 - Right hand view**

## GENERAL CHARACTERISTICS « SCRAMBLER » MODEL

### ENGINE

Single cylinder, four stroke, bore 52 mm. (2.043"), stroke 58 mm. (2.283"), swept volume 123.175 cc. (7.515 cu. in.), compression ratio 9.8 : 1, output 12 HP.

#### Cylinder barrel

Of light alloy with special cast iron inserted liner.

#### Cylinder head

Of light alloy with valve gearing in oil bath.

#### Crankcase

Bottom part heavily finned for better oil cooling.

#### Valve operation

Overhead valves, push rods and rocker operated.  
Push rods timed by camshaft and flat bottom tappet. Normal rocker-valve clearance (cold engine)  
— inlet 0.10 mm. (.0039")  
— exhaust 0.15 mm. (.0059").

#### Fuel feed

By gravity from the tank.

#### Ignition

By flywheel alternator (6 V - 28 W) with external H.T. coil.  
Spark plug:  
— for normal cruising: Marelli No. 260 (Bosch thermic scale);

#### Lubrication

Forced, by gear pump and detachable filter.

#### Cooling

By air, cylinder and cylinder head deeply finned.

#### Clutch

Multiplate discs in oil bath (5 discs).

#### Transmission

Primary drive by helical gears (engine-gearbox) secondary drive by roller chain.

Engine-gearbox ratio . . . . .	2.8 to 1 (25-70)
Gearbox-sprocket ratio . . . . .	3.2 to 1 (15-48)

Overall gear ratios:

Bottom gear . . . . .	27,2 to 1
Second gear . . . . .	16,2 to 1
Third gear . . . . .	11,5 to 1
Top gear . . . . .	8.9 to 1

### Gear box

Constant mesh gears, 4 speeds foot operated.

Ratios:

Bottom gear . . . . .	1 to 3.04
Second gear . . . . .	1 to 1.81
Third gear . . . . .	1 to 1.29
Top gear . . . . .	1 to 1

### FRAME

Welded tubular structure.

**Front suspension:** telescopic fork with hydraulic dampers.

**Rear suspension:** swinging arm and coil spring on the dampers.

**Handlebar:** raised type, adjustable.

**Seat:** dual seat.

**Brakes:** expanding on both wheels. Front, hand operated - rear, foot operated.

**Wheels:** spoked steel rims 17 x 2 1/4.

**Tires:** front 2.75 x 17 Block Tread; rear 3.00 x 17 Special for motocross.

Tire pressure:

front tire abt. 1.7 kgs/mm <sup>2</sup> (abt. 24 lbs/sq. in.) solo	
front tire abt. 1.85 kgs/mm <sup>2</sup> (abt. 26 lbs/sq. in.) with pillion	
rear tire abt. 1.85 kgs/mm <sup>2</sup> (abt. 26 lbs/sq. in.) solo	
rear tire abt. 2.8 kgs/mm <sup>2</sup> (abt. 35 lbs/sq. in.) with pillion	

#### Overall dimension and weight:

wheelbase . . . . .	1.250 mts. (abt. 49.23")
length . . . . .	1.900 mts. (abt. 74.80")
width . . . . .	0.740 mts. (abt. 29.13")
height (dry) . . . . .	1.040 mts. (abt. 40.94")
minimum ground clearance . . . . .	0.180 mts. (abt. 7.08")
dry weight . . . . .	abt. 95 kgs. (abt. 210 lbs.)

**Performances:** the maximum permissible speeds in each gear are marked off on the speedometer:

bottom gear . . . . .	kms. 30 (18.6 m.p.h.)
second gear . . . . .	kms. 51 (31.7 m.p.h.)
third gear . . . . .	kms. 71 (44.1 m.p.h.)
top gear . . . . .	kms. 93 (57.8 m.p.h.)

Maximum gradient climbable: 33 %.

**Fuel consumption:** 3 lts. for 100 kms. (about 94 m.p.g. imp. abt. 78 m.p.g. USA, measured according to CUNA standards).

**Fuel replenishments:** petrol tank capacity 12.5 litres (Imp. gall. 2,749, US gall. 3,302 including a reserve of about 2 litres (Imp. gall. 0.439, US gall. 0.528). Use only high grade petrol. Oil sump in crankcase. Quantity required: abt. 1.9 (0.439 Imp. gall., 0.501 US gall.).

# INDEX TO PLATES

MODEL	MAIN GROUP	GROUP	PLATE No.
125 cc. SPORT	ENGINE	Cylinder - Cylinder head - Rocker box - Rocker - Valves - Inlet pipe . . . . .	1
		Crankcase - Covers - Oil pump . . . . .	2
		Crankshaft - Connecting rod - Piston - Camshaft - Timing gears . . . . .	3
	FRAME	Petrol tank - Exhaust pipe - Muffler . . . . .	4
	ENGINE	Carburetor . . . . .	5
	TRANSMISSION	Clutch - Clutch operating levers - Kickstarter . . . . .	6
	GEAR BOX	Gears - Shafts - Gear control . . . . .	7
	FRAME	Frame - Rear fender - Seat - Centre stand - Tool box . . . . .	8
	SUSPENSION	Front suspension - Steering - Front fender . . . . .	9
	STEERING	Handlebar and Control levers . . . . .	10
	SUSPENSION	Swinging fork - Rear dampers - Chain guard . . . . .	11
	FRAME	Front wheel - Hub - Front brake - Speedometer . . . . .	12
	FRAME	Rear wheel - Hub - Rear brake . . . . .	13
	ELECTRICAL SYSTEM	Flywheel - Outer coil - Spark plug . . . . .	14
	LIGHTING EQUIPMENT	Battery - Headlight - Plate number - Tail light - Stop cutout - Horn - Cable harness . . . . .	15
TOOLKIT	Standard tool kit . . . . .	16	
SCRAMBLER 125 cc.	VARIABLES	Exhaust pipe - Muffler - Handlebar - Engine au Chain sprockets - Kickstart . . . . .	17
		Front fender - Rearfender - Chain guard - Dual seat . . . . .	18

# NUMERICAL INDEX

## (SPORT AND SCRAMBLER)

Order No.	Plate No.	Figure No.	Order No.	Plate No.	Figure No.	Order No.	Plate No.	Figure No.	Order No.	Plate No.	Figure No.	Order No.	Plate No.	Figure No.	Order No.	Plate No.	Figure No.
11333500	17	28	32114300	5	51	55036626	1	28	55082301	6	16	55212600	7	39	55408450	18	23
11901000	16	13	32251000	7	11	55037025	1	25	55082600	6	18	55213000	7	40	55430300	8	37
16902300	16	14	32478500	8	28	55038025	1	23	55082900	6	20	55213600	7	44	55430375	18	20
24085200	6	23	32478600	8	29	55038050	17	22	55083800	6	44	55214000	7	45	55433900	8	35
24092900	6	35	32551600	11	24	55038125	1	22	55085500	6	25	55214400	7	47	55434325	9	47
24103901			32614700	12	29	55040500	3	32	55090101	6	27	55214700	7	48	55434375	18	11
24104001				13	36	55045025	3	35	55090900	2	13	55230500	7	32/1	55434825	9	48
24104601			32717000	14	37	55045800	3	34	55090975	17	21	55232400	7	33	55436525	9	51
24104701	4	11	32741101	15	48	55046025	3	36	55091300	6	28	55234400	7	27	55437025	8	42
24104801			32902000	16	11	55046925	3	37	55091601	6	32	55234700	7	31	55437075	18	10
24104901			32902400	16	15	55053300	3	33	55093075	6	34	55235200	7	29	55438775	18	12
24105001			36106800	4	21	55060430			55100285	4	10	55236400	7	19	55438885	8	43
24262500	6	49	36443200	8	21	55060431			55112485	5	10	55236800	7	14	55440285	8	17
24331900	7	38	36515200	9	40	55060432	3	19	55114450	5	50	55237800	7	16	55440485	8	18
24333100	13	23	36603400	10	26	55060433			55115025	1	47	55237900	7	20	55441385	8	19
24333500	13	24	36901900	16	10	55060434			55115525	1	48	55238200	7	15	55441585	8	20
24336800	13	43	36905000	16	12	55060700			55117585	5	52	55238500	7	21	55442300	8	47
24434000	8	36	38030800	1	33	55060701			55120225	4	27	55250900	7	10	55443385	8	49
24492725	9	32	38237700	7	26	55060702	3	20	55120725	4	25	55250950	17	45	55460576	18	19
24504525	9	28	38262100	17	18	55060703			55120776	17	30	55260200	6	45	55460585	8	38
24513425	9	38	38262200	17	20	55060704			55121976	17	32	55260285	17	11	55463285	8	39
24515000	9	42	38717400	14	36	55060900			55123030	4	33	55262300	6	47	55473001	11	16
24515100	9	43	55000125	2	12	55060901			55123076	17	42		17	14	55473075	18	18
24525425	9	19	55000200	2	10	55060902	3	21	55124076	17	40	55262585	17	12	55474985	15	37
24525925	9	16	55000900	2	18	55060903			55127025	4	29	55264500	6	55	55476085	8	26
24526025	9	17	55001200	2	16	55060904			55127076	17	33	55265600	6	57	55476200	8	27
24527400	9	25	55001600	2	15	55060925			55128776	17	37	55265700	6	53	55490275	9	10
24527525	9	24	55001700	2	17	55060926			55129076	17	34	55265900	6	54	55490625	9	33
24527625	9	27	55012400	2	28	55060927	3	20/1	55142300	2	40	55266400	6	39	55490725	9	34
24527725	9	20	55012700	2	35	55060928			55146525	2	50	55266900	6	42	55493000	9	30
24528125	9	22	55020225	1	49	55060929			55147700	2	49	55267100	6	40	55494000	9	35
			55020800	1	50	55061225	3	18	55147800	2	51	55330525	7	37	55500200	10	11/1
24610800	12	11	55021825	1	52	55061526	3	13	55148500	2	52	53330550	17	24	55500500	10	11
	13	11	55022225	1	21	55064026	3	10	55150025	2	57	55332201	13	45	55500700	10	13
	12	12	55023025	1	14	55064325	3	10/2	55150125	2	58	55332276	17	26	55503076	18	22
24611525	13	12	55023300	1	18	55064425	3	10/1	55150225	2	59	55333276	17	C	55522525	9	11
	12	24	55023525	1	10	55065025	3	11	55151700	2	42	55333775	17	B	55522625	9	14
24633625	13	38	55023725	1	11	55065400	3	23	55152200	2	44	55333776	17	25	55540201	11	10
25105400	4	20	55024800	1	42	55067100	3	28	55152225	2	56	55333777	17	A	55550225	11	23
32323100	17	27	55026125	1	31	55070225	3	24	55153600	2	55	55333701	13	44	55552325	11	25
32034000	1	35	55030225	1	32	55080400	6	21	55154300	2	45	55336601	13	16	55553600	11	11
32062525	3	15	55030425	1	34	55081100	6	13	55158200	1	20	55335200	13	42	55569400	11	15
32085700	6	26	55031825	1	37	55081600	6	12	55210500	7	34	55336301	13	15	55600176	17	10
32103400	4	17	55036025	1	26	55081700	6	11	55211300	7	42	55400201	8	10	55600276	18	25
32103500	4	18	55036125	1	27	55082201	6	17	55211400	7	41	55400275	17	44	55630276	18	25

# NUMERICAL INDEX

## (SPORT AND SCRAMBLER)

Order No.	Plate No.	Figure No.	Order No.	Figure No.	Figure No.	Order No.	Plate No.	Figure No.	Order No.	Plate No.	Figure No.	Order No.	Plate No.	Figure No.	Order No.	Plate No.	Figure No.
55600185	10	10	55709800	14	20	55932085	5	30	90511730	3	38		2	34	93701420	17	30/1
55600285	10	10/1	55712400	14	10	55932185	5	20	90561525	6	46		7	23	93760072	10	21
55601085	10	16	55715000	14	24	55932285	5	29	90562537	9	23		8	30	94030060	12	17
55601985	10	25	55715100	14	23	55932385	5	17	90565566	12	18	92602206	14	29	94321044	6	41
55603000	10	28	55715600	14	22	55932485	5	18	90706156	9	29		15	40	94321049	7	25
55603500	10	27	55716500	14	11	55932585	5	19	90706310	9	21		17	36		6	48
55605485	10	14	55716825	14	34	55932885	5	11				18	15	94321058		17	16
55605585	10	23	55716850	18	21	55932985	5	12	90713231	12	28		8	23	94321063	7	32
55605600	10	15	55717300	14	35	55933085	5	27				13	35	92602208		1	17
55605700	10	24	55718800	14	12	55933185	5	28	90714100	4	19		15	52	94321101	6	19
55610200	12	10	55718900	14	13	55933285	5	26	90714195	2	41	92602210	8	14	94321135	1	24
55613200	12	13	55719000	14	14	55933785	5	31	90714302	2	43		9	44	94321301	9	26
55614100	12	27	55740385	15	22	55933985	5	32	90716082	1	46		1	36	94321318	1	38
55615200	12	23	55740585	15	14	55934085	5	16	90716095	1	43	92602406	9	54	94322215	14	39
55620200	12	16	55741385	15	46	55934685	5	15	90718325	4	26		10	19	95001204		
55620500	12	22	55741785	15	42	55934785	5	14	91111210	7	46	92700050	15	49		1	41
	13	22	55741985	15	45	55934985	5	13	91111514	2	32	92700061	13	17		8	31
	12	25	55742585	15	28	55935085	5	43	91111516	3	14		6	29	95021106	10	18
55622100	13	25	55743085	15	27	55935185	5	48	91112547	9	18	92700071	17	13		18	16
	12	21	55743485	15	24	55935285	5	49	91121215	2	37	92700072	6	37	95100055	15	50
55622500	13	21	55743700	15	13	55935385	5	46	91122647	9	15		6	50	95100117	1	16
	12	20	55743985	15	29	55935585	5	34	91122824	6	14	92700073	8	41	95100122	2	27
55625000	12	26	55744185	15	25	55935785	5	33	91141215	2	38		11	19		1	13
55625475	13	10	55744275	17	29	55935985	5	37	91182005	3	25		13	33		2	23
55630276	18	25	55744885	15	26	55936285	5	39	91180809	18	22/1	92700122	7	17		7	13
55632200	13	13	55745285	15	47	55936385	5	38	91181272	17	17	92700125	12	14		8	48
55633300	13	39	55745885	15	43	55936685	5	35	91182005	3	25	92700166	6	10	95100130	9	50
55635200	13	18	55746085	15	30	55936885	5	36	91551061	15	33	92701086	2	47		14	30
55671401	13	20	55747100			55937185	5	42	91551081	8	46		1	29		15	39
55676001	13	28	55747117			55937585	5	41	91551098	2	46	92701087	4	12		17	35/1
55676501	13	31	55747200	15	32	55937785	5	40	91701237	3	27		8	11		18	17
55677000	13	32	55747325			55937885	5	47	91701345	3	26	92701104	11	12	95100133	2	23/1
55701600	14	28	55747900			55937985	5	45				92701106	1	53	95100137	10	12
55702200	14	27	55748885	15	21	55938185	5	44	92201215	12	30	92701124	3	30		13	30
55704500	15	10	55749485	15	20	55938585	5	21				92701153	13	14	95100139	2	31
55705500	15	12	55760426	12	32	55938685	5	23				92701189	9	36		8	45
55705600	15	11	55761626	12	31	55938785	5	22	92201224	2	36	92750181	3	22	95100173	6	51
55707900	14	25	55762500	12	33	55938985	5	24	92201419	2	33	93302106	15	36		11	18
55708600	14	26	55768685	15	22/1	55939085	5	25	92201820	2	24	93302110	15	35	95100222	7	28
55708800	14	21	55768885	15	17	90118122	1	39	92230420	2	25	93302225	15	34	95100223	1	45
55708900	14	19	55768985	15	19	90118880	6	15	92295704	9	41	93450110	15	18	95100225	9	13
55709000	14	18	55900400	16	16	90271008	7	30				93450111	12	34	95100245	4	16
55709100	14	17	55911200	16	17	90271020	7	43	92295706	6	24	93450212	15	44	95100249	18	19/1
55709300	14	16	55914585	16	18	90351017	3	17		17	15	93450312	15	23	95100253	8	40
55709400	14	15	55917875	17	43	90402030	2	39	92296751	3	16	93701241	7	35	95100291	11	22

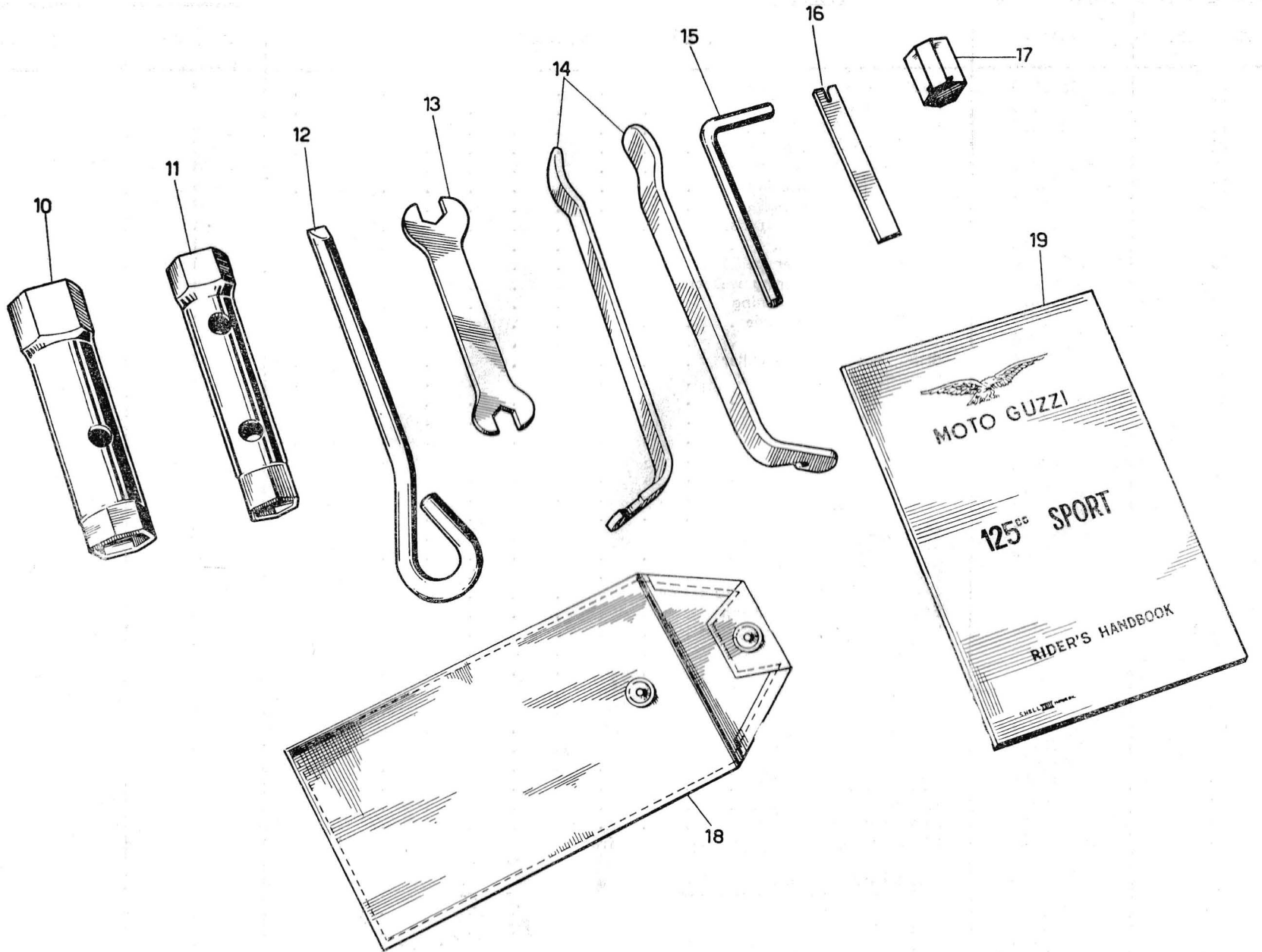
# NUMERICAL INDEX

## (SPORT AND SCRAMBLER)

Order No.	Plate No.	Figure No.	Order No.	Figure No.	Figure No.	Order No.	Plate No.	Figure No.	Order No.	Plate No.	Figure No.	Order No.	Plate No.	Figure No.	Order No.	Plate No.	Figure No.
55600185	10	10	55709800	14	20	55932085	5	30	90511730	3	38		2	34	93701420	17	30/1
55600285	10	10/1	55712400	14	10	55932185	5	20	90561525	6	46		7	23	93760072	10	21
55601085	10	16	55715000	14	24	55932285	5	29	90562537	9	23		8	30	94030060	12	17
55601985	10	25	55715100	14	23	55932385	5	17	90565566	12	18	92602206	14	29	94321044	6	41
55603000	10	28	55715600	14	22	55932485	5	18	90706156	9	29		15	40	94321049	7	25
55603500	10	27	55716500	14	11	55932585	5	19	90706310	9	21		17	36		6	48
55605485	10	14	55716825	14	34	55932885	5	11				18	15	94321058	17	16	
55605585	10	23	55716850	18	21	55932985	5	12	90713231	12	28		8	23	94321063	7	32
55605600	10	15	55717300	14	35	55933085	5	27				13	35	92602208	15	52	
55605700	10	24	55718800	14	12	55933185	5	28	90714100	4	19		17	39	94321101	1	17
55610200	12	10	55718900	14	13	55933285	5	26	90714195	2	41	92602210	8	14	94321135	6	19
55613200	12	13	55719000	14	14	55933785	5	31	90714302	2	43		9	44	94321301	1	24
55614100	12	27	55740385	15	22	55933985	5	32	90716082	1	46		1	36	94321318	9	26
55615200	12	23	55740585	15	14	55934085	5	16	90716095	1	43	92602406	9	54	94322215	1	38
55620200	12	16	55741385	15	46	55934685	5	15	90718325	4	26		10	19	95001204	14	39
55620500	12	22	55741785	15	42	55934785	5	14	91111210	7	46	92700050	15	49		1	41
	13	22	55741985	15	45	55934985	5	13	91111514	2	32	92700061	13	17	95021106	8	31
	12	25	55742585	15	28	55935085	5	43	91111516	3	14		6	29		10	18
55622100	13	25	55743085	15	27	55935185	5	48	91112547	9	18	92700071	17	13		18	16
	12	21	55743485	15	24	55935285	5	49	91121215	2	37	92700072	6	37	95100055	15	50
55622500	13	21	55743700	15	13	55935385	5	46	91122647	9	15		6	50	95100117	1	16
55625000	12	20	55743985	15	29	55935585	5	34	91122824	6	14	92700073	8	41	95100122	2	27
55625475	12	26	55744185	15	25	55935785	5	33	91141215	2	38		11	19		1	13
55630201	13	10	55744275	17	29	55935985	5	37	91182005	3	25		13	33		2	23
55630276	18	25	55744885	15	26	55936285	5	39	91180809	18	22/1	92700122	7	17		7	13
55632200	13	13	55745285	15	47	55936385	5	38	91181272	17	17	92700125	12	14		8	48
55633300	13	39	55745885	15	43	55936685	5	35	91182005	3	25	92700166	6	10	95100130	9	50
55635200	13	18	55746085	15	30	55936885	5	36	91551061	15	33	92701086	2	47		14	30
55671401	13	20	55747100			55937185	5	42	91551081	8	46		1	29		15	39
55676001	13	28	55747117			55937585	5	41	91551098	2	46	92701087	4	12		17	35/1
55676501	13	31	55747200	15	32	55937785	5	40	91701237	3	27		8	11		18	17
55677000	13	32	55747325			55937885	5	47	91701345	3	26	92701104	11	12	95100133	2	23/1
55701600	14	28	55747900			55937985	5	45				92701106	1	53	95100137	10	12
55702200	14	27	55748885	15	21	55938185	5	44	92201215	2	29	92701124	3	30		13	30
55704500	15	10	55749485	15	20	55938585	5	21		12	30	92701153	13	14		2	31
55705500	15	12	55760426	12	32	55938685	5	23		13	37	92701189	9	36	95100139	8	45
55705600	15	11	55761626	12	31	55938785	5	22	92201224	2	36	92750181	3	22	95100173	6	51
55707900	14	25	55762500	12	33	55938985	5	24	92201419	2	33	93302106	15	36		11	18
55708600	14	26	55768685	15	22/1	55939085	5	25	92201820	2	24	93302110	15	35	95100222	7	28
55708800	14	21	55768885	15	17	90118122	1	39	92230420	2	25	93302225	15	34	95100223	1	45
55708900	14	19	55768985	15	19	90118880	6	15	92295704	9	41	93450110	15	18	95100225	9	13
55709000	14	18	55900400	16	16	90271008	7	30				93450111	12	34	95100245	4	16
55709100	14	17	55911200	16	17	90271020	7	43	92295706	6	24	93450212	15	44	95100249	18	19/1
55709300	14	16	55914585	16	18	90351017	3	17		17	15	93450312	15	23	95100253	8	40
55709400	14	15	55917875	17	43	90402030	2	39	92296751	3	16	93701241	7	35	95100291	11	22



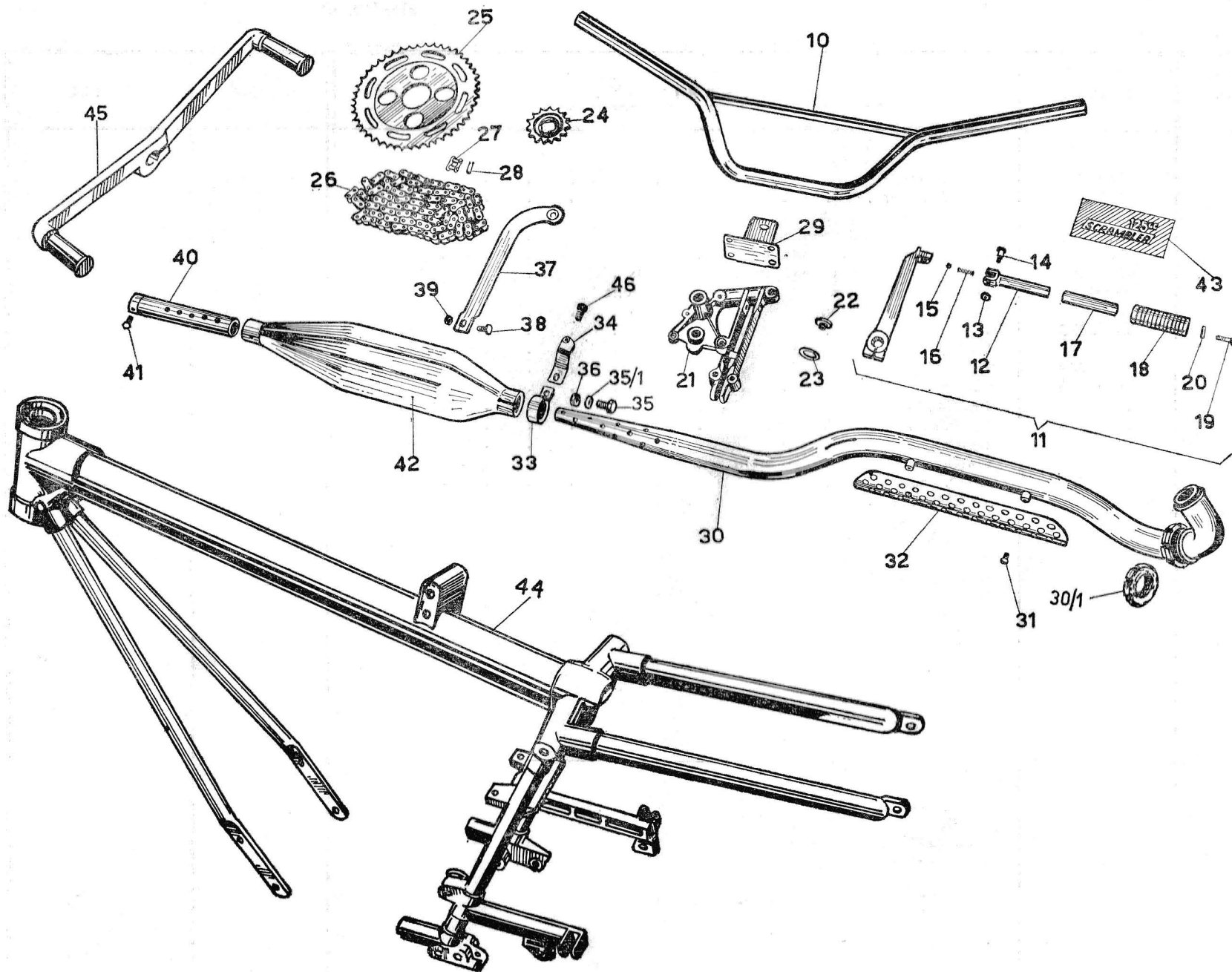




**125 SCRAMBLER  
PLATE 17  
Variables**

**GROUP: Exhaust pipe - Muffler - Handlebar  
Engine and chain sprockets - Kickstart**

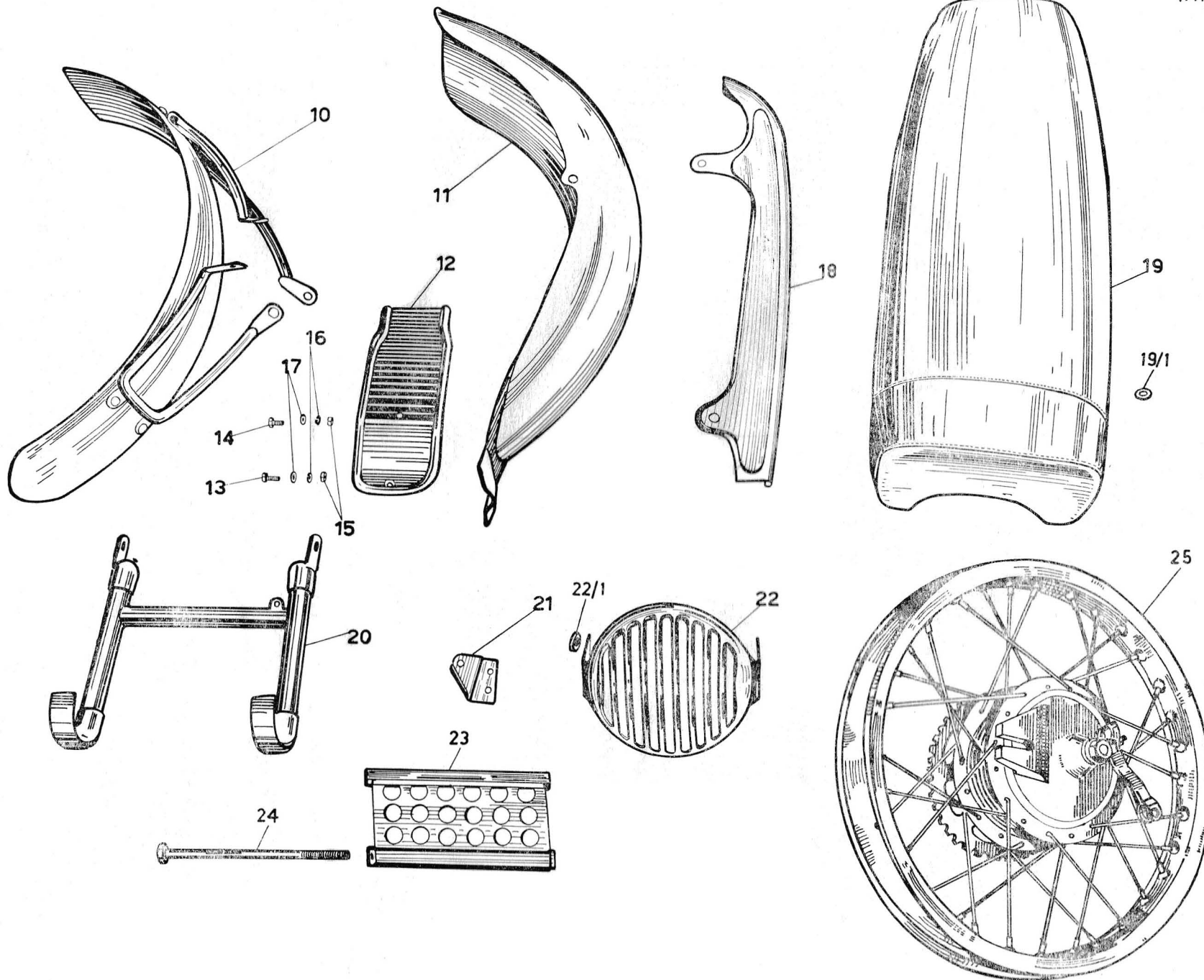
FIGURE No.	ORDER No.	DESCRIPTION	QUANTITY	NOTES
10	{ 55600276	HANDLEBAR, c/w levers . . . . .	1	
	55600176	HANDLEBAR, bare . . . . .	1	
11	55260285	KICKSTART ASSEMBLY, complete . . . . .	1	
12	55262585	FOLDING PEDAL, kickstart . . . . .	1	
13	92700071	NUT, pedal securing screw . . . . .	1	
14	55262300	SCREW, pedal securing . . . . .	1	
15	92295706	BALL, kickstarter pedal . . . . .	1	
16	94321058	SPRING, kickstarter pedal . . . . .	1	
17	91181272	TUBE, revolving . . . . .	1	
18	38262100	RUBBER, kickstarter pedal . . . . .	1	
19	98366013	SCREW, pedal securing washer . . . . .	1	
20	38262200	WASHER, pedal retaining . . . . .	1	
21	55090975	COVER, control spindle . . . . .	1	
22	55038050	TOP COLLAR, valve . . . . .	1	
23	95100717	SHIM, bottom valve collar . . . . .	1	
24	55330550	ENGINE SPROCKET, 15T . . . . .	1	
25	55333776	CHAIN SPROCKET, 48T . . . . .	1	
26	55332276	DRIVE CHAIN . . . . .	1	
27	32323100	CHAIN LINK . . . . .	1	
28	11333500	SPRING, chain link . . . . .	1	
29	55744275	PLATE, horn carrying . . . . .	1	
30	55120776	EXHAUST PIPE . . . . .	1	
30/1	93701420	LOCKRING, exhaust pipe . . . . .	1	
31	98345007	SCREW, plate protection, securing . . . . .	2	
32	55121976	PROTECTION PLATE . . . . .	1	
33	55127076	CLAMP, exhaust pipe . . . . .	1	
34	55129076	CONNECTING LUG, pipe to frame . . . . .	1	
35	98054316	BOLT, exhaust pipe clamp . . . . .	1	
35/1	95100130	WASHER, clamp securing bolt . . . . .	1	
36	92602206	NUT, clamp securing bolt . . . . .	1	
37	55128776	STAY, muffler to frame securing . . . . .	1	
38	98024412	BOLT, stay securing to muffler . . . . .	1	
39	92602208	NUT, muffler securing bolt . . . . .	1	
40	55124076	BAFFLE PLATE, muffler . . . . .	1	
41	98024310	SCREW, baffle plate securing . . . . .	1	
42	55123076	MUFFLER . . . . .	1	
43	55917875	DECAL, 125 Scrambler . . . . .	1	
44	55400275	FRAME . . . . .	1	
45	55250950	GEARSHIFT lever . . . . .	1	
46	98106021	BOLT, tool box and connecting plate to frame . . . . .	1	
		<b>Supplied as extra accessories</b>		
A	55333777	Chain sprocket, 53 T . . . . .	1	
B	55333775	Chain sprocket, 51 T . . . . .	1	
C	55333276	Chain link, double . . . . .	1	



**125 SCRAMBLER**  
**PLATE 18**  
**Variables**

**GROUP: Front fender - rear fender - chainguard**  
**dual seat**

FIGURE No.	ORDER No.	DESCRIPTION	QUANTITY	NOTES
10	55434375	FENDER, front . . . . .	1	
11	55437075	FENDER, rear . . . . .	1	
12	55438775	SPLASHGUARD . . . . .	1	
13	98106021	BOLT, fender and splashguard to frame . . . . .	1	
14	98024312	BOLT, splashguard securing . . . . .	1	
15	92602206	NUT, fender and splashguard securing bolts . . . . .	2	
16	95021106	SPRING WASHER, fender and splashguard bolts . . . . .	2	
17	95100130	WASHER, fender and splashguard bolt . . . . .	2	
18	55473075	CHAINGUARD . . . . .	1	
19	55460576	DUAL SEAT . . . . .	1	
19/1	95100249	WASHER, seat securing bolt . . . . .	2	
20	55430375	CENTER STAND . . . . .	1	
21	55716850	BRACKET, coil support . . . . .	1	
22	55503076	SCREEN, headlight lens protector . . . . .	1	
22/1	91180809	SPACER, headlight screen . . . . .	2	
23	55408450	PLATE, engine protection, front . . . . .	1	
24	98108187	STUD, engine fixing . . . . .	2	
25	55630276	WHEEL, rear . . . . .	1	



Tipografia ADDA - Lecco

Printed in Italy 1966 - 500