

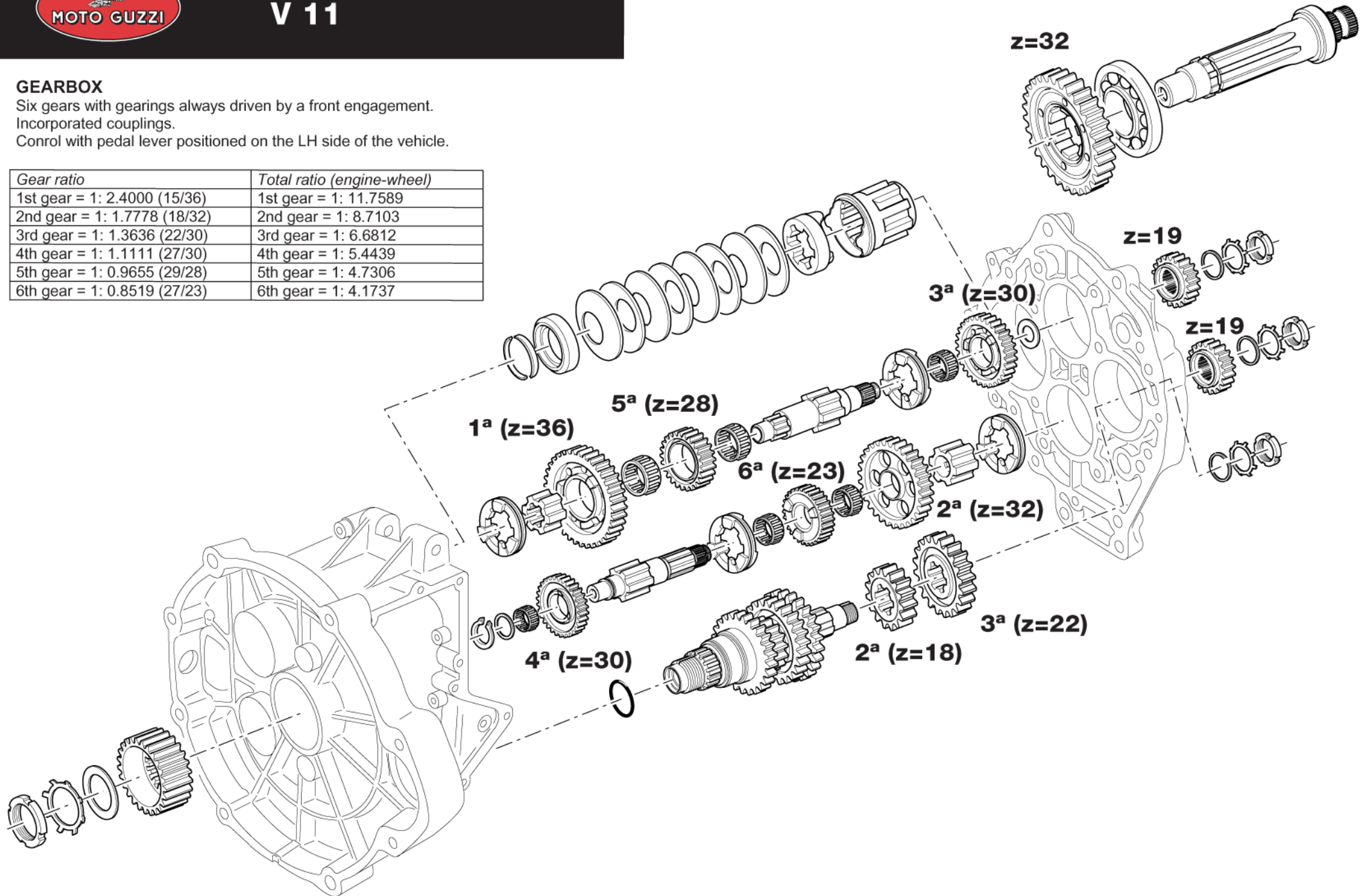


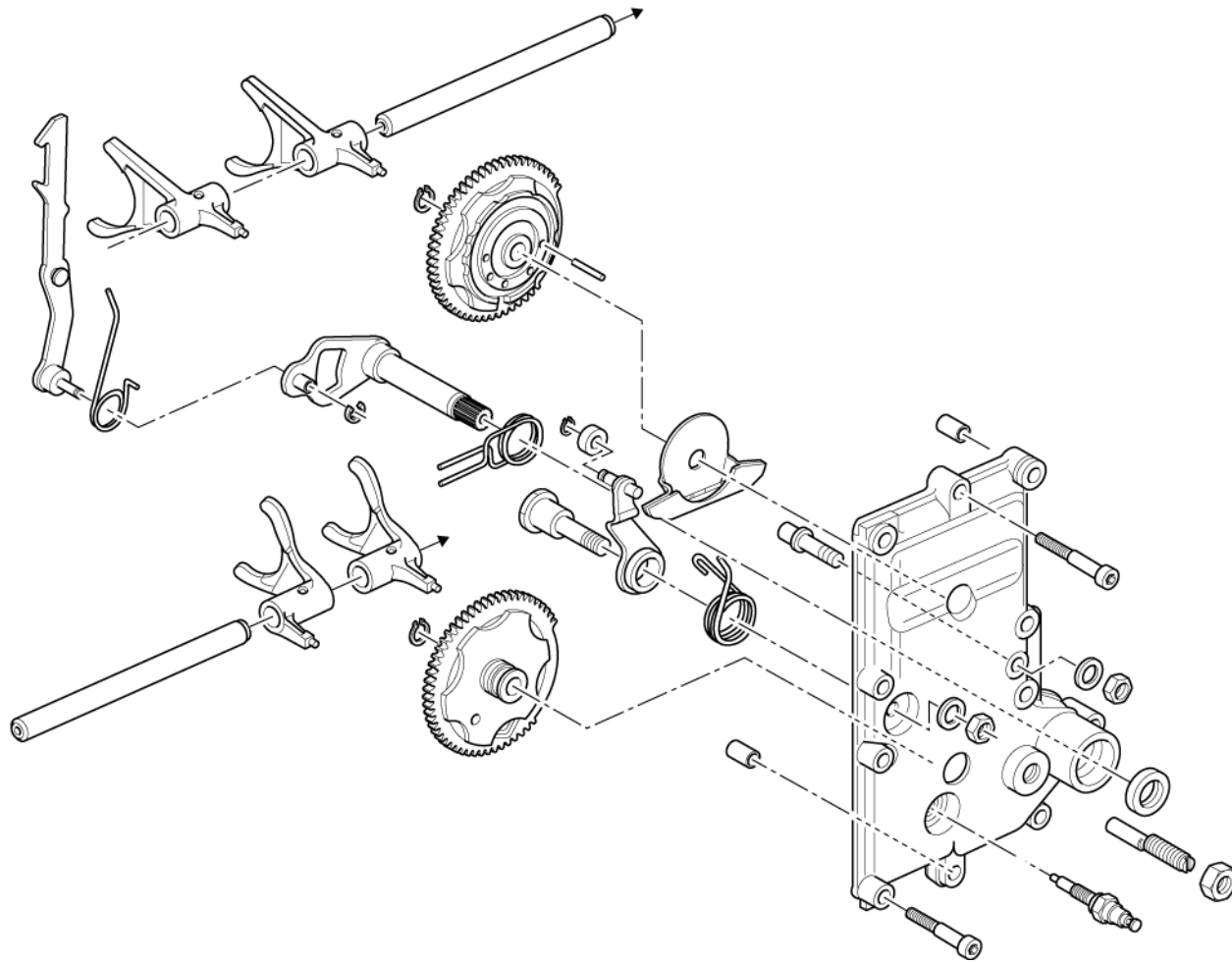
V 11

GEARBOX

Six gears with gearings always driven by a front engagement.
Incorporated couplings.
Control with pedal lever positioned on the LH side of the vehicle.

<i>Gear ratio</i>	<i>Total ratio (engine-wheel)</i>
1st gear = 1: 2.4000 (15/36)	1st gear = 1: 11.7589
2nd gear = 1: 1.7778 (18/32)	2nd gear = 1: 8.7103
3rd gear = 1: 1.3636 (22/30)	3rd gear = 1: 6.6812
4th gear = 1: 1.1111 (27/30)	4th gear = 1: 5.4439
5th gear = 1: 0.9655 (29/28)	5th gear = 1: 4.7306
6th gear = 1: 0.8519 (27/23)	6th gear = 1: 4.1737







California

GEARBOX

5-speed, front engaging, constant mesh.
Incorporated Cush drive
Control pedal on left side of machine.

Gear ratio	Total ratio (engine-wheel)
1st 1:2 (Z=14/28)	1st gear = 1:10.1912
2nd 1:1.3889 (Z=18/25)	2nd gear = 1: 7.0772
3rd 1:1.0476 (Z=21/22)	3rd gear = 1: 5.3382
4th 1:0.8696 (Z=23/20)	4th gear = 1: 4.4309
5th 1:0.7500 (Z=28/21)	5th gear = 1: 3.8217

